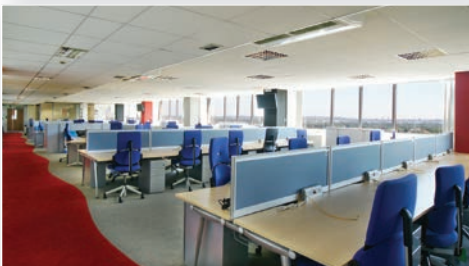


**SUTTON LANDMARK OFFICES**  
ADJACENT TO SUTTON MAINLINE RAIL STATION  
**FROM 3,000 SQ FT TO LET**



**QUADRANT  
HOUSE**

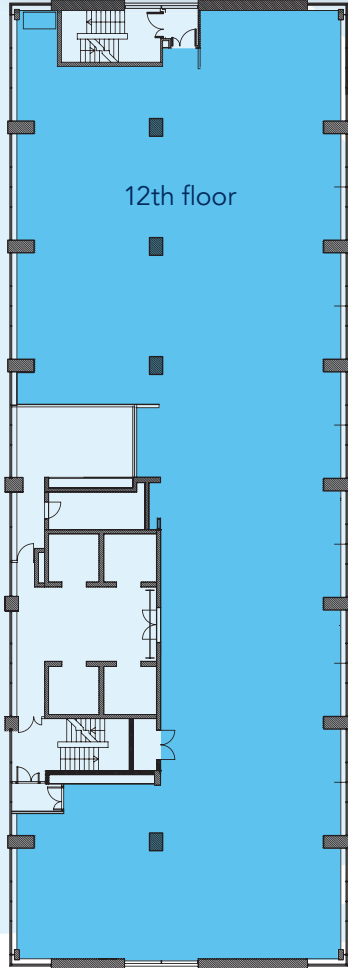


**UNIQUE OPPORTUNITY TO LET**



## QUADRANT HOUSE

# FROM 3,000 SQ FT TO LET



- Professional, modern business environment
- Fully air conditioned
- 24/7 access/security
- Staff restaurant and café on site
- 8 lifts
- Cycle racks and showers
- On site ATM
- Disabled access
- 12th floor available either as a whole or part
- Prime location adjacent to Sutton rail station
- First-rate rail links to London
- Good road links to M25, Gatwick and Heathrow
- EPC Rating G – 166

